

BETTER BETHNAL GREEN

With Osmani Trust, Streets of Growth, Spotlight, Tower Hamlets CVS and ELBA

Quarter 1 – April-June 2024

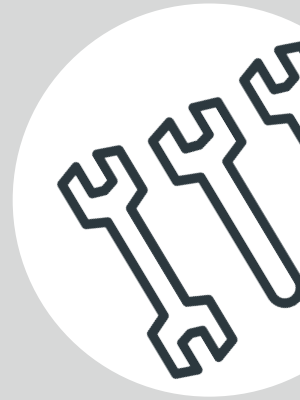


What we're shouting about

As a consortium, we have made great strides in including young people and wider stakeholders in our **hyperlocal interventions planning and implementation**. We have successfully continued our progress from MyEnds 1.0 through **staff and knowledge retention** across the consortium, which has enabled continuous improvement and delivery of high-quality, impactful interventions. We have established a range of **referral pathways** such as local authority, alternative provisions and the police, which have already supported many high-risk young people.

What we're working on

Through our board, the team has been working closely with Statutory Partners to ensure **maximum reach and impact** to address potential increases in anti-social behaviour and criminal activity based on data. In light of announcements made by the secretary of state, we have also been working hard to **avoid a re-emergence of conflicts** between key groups within our catchment area which may arise as a result of prisoners returning back to the community.



Building our Voice



We have involved wider stakeholders and young people from the original bid in shaping how the interventions will operate, ensuring they are relevant and impactful. This includes making decisions about the timing and scheduling of programs to **best meet participants' needs**. We are **focusing on strengthening structures, partnerships, upskilling stakeholders and establishing networks** with a focus on resourcing and retention to ensure high-quality interventions and ongoing plans in place to improve sustainability planning.

Boosting Community Voice



Osmani Trust branch has begun engaging young people in all consortium interventions, including **contributing to our board**. As part of our community engagement strategy, we have held meetings with key stakeholders from specific groups, such as Coffee Afrik, WIT, Aashadibi, various youth providers and LA-funded services for those with additional needs or disability. To ensure we are **continually amplifying all community voices**, our board conducts a quarterly review of how we engage specific groups, such as female participation, to ensure inclusivity.

Intervention Spotlight



The employability skills and training program offered young people soft skills development, employability training, work experience placements, career insight sessions, and personalised mentorship from volunteer Pathfinder Mentors. **25 children and young people have developed their skills, with 17 participating in a total of 36 one-to-one career coaching sessions**. Additionally, 3 young people have applied for apprenticeships, and 17 are regularly working with their employability coach to pursue employment and training opportunities.

How you can contact us:

info@osmanitrust.org | 020 7247 8080

mail@streetsofgrowth.org | 0207 515 7356

hello@wearespotlight.com | 020 30 111 333

info@thcvs.org.uk | 0203 559 6696

info@elba-1.org.uk | 020 7068 6960